



Fabrif Buffing Wheels and Lamellar Wheels for your edgebander



Our **Premium Fabric-Buffing Wheels** are distinguished by a strong fabric quality. As a result, a spreading of the buffing wheels on the edge radius is avoided.

In connection with the special **RIEPE® Cleaning Agent LP163/93®**, the edge radius is polished so that its sheen matches that of the surface. The life of the buffing wheels is also considerably increased by the Cleaning Agent LP163/93®.

Result:

Material re-finishing · Reduction in stress whitening · Radius optic adapts to the workpiece surface (when using LP163/93®)



Our **Fabric-Sisal-Lamellar Wheels** are brushes with a cast mounting core. The lamellar are composed of the following ratio: 3 x fabric and 1 x sisal. The cloth in the lamellar serves to remove the previously applied **RIEPE® Cleaning Agent LP163/93®**.

The fabric-sisal-lamellar wheels are suitable for all types of thermoplastic edgings. In addition, they have, in combination with the special Cleaning Agent LP163/93®, a very long operating life. The use of the fabric-sisal-lamellar wheels while processing thin edges (<1mm) leads to the following:

Result:

Material re-finishing · Removal of the protruding edging material · Smoothing of the edge band (sharpness) · Reduction in stress whitening · Radius optic adapts to the workpiece surface

Available Sizes



Fabric-Buffing Wheels

| Article No. | Outer diameter (mm) | Width (mm) | Boreholes (mm) |
|----------------------|---------------------|------------|----------------|
| 1832 | 120 | 11 | 19 (hex) |
| 1833 | 120 | 20 | 19 (hex) |
| 1863 | 130 | 20 | 50 |
| 3147 | 145 | 15 | 44,7 |
| 3694 | 150 | 10 | 19 (hex) |
| 1843 | 150 | 19 | 50 |
| 1835 | 150 | 20 | 19 (hex) |
| 1845 | 150 | 20 | 25 |
| 3204 | 150 | 25 | 25 |
| 1846 | 150 | 25 | 50 |
| 1847 | 150 | 27 | 11 |
| 3500 | 150 | 40 | 19 (rund) |
| 1848 | 160 | 20 | 40 |
| 1850 | 160 | 25 | 20 |
| 1853 | 160 | 25 | 50 |
| 1855 | 160 | 25 | 55 |
| 1857 | 190 | 20 | 40 |
| 1858 | 190 | 20 | 50 |
| 3495 | 190 | 35 | 40 |
| 3265 | 200 | 25 | 50 |

Many sizes are immediately available from stock

Available Sizes



Fabric-Sisal-Lamellar Wheels

| Article No. | Outer diameter (mm) | Width (mm) | Boreholes (mm) |
|-------------|---------------------|------------|---------------------------|
| 1871 | 120 | 20 | 19 (hex) |
| 3760 | 120 | 20 | 19 (hex) $\varnothing 20$ |
| 3680 | 120 | 20 | 25 |
| 3116 | 140 | 20 | 19 (rund) |
| 1875 | 140 | 25 | 50 |
| 3140 | 150 | 20 | 19 (hex) |
| 3025 | 150 | 25 | 19 (hex) |
| 3391 | 150 | 25 | 25 |
| 3352 | 150 | 27 | 11 |
| 1877 | 160 | 25 | 40 |
| 1878 | 160 | 25 | 50 |
| 1880 | 160 | 25 | 55 |
| 1881 | 190 | 20 | 40 |
| 1882 | 190 | 20 | 50 |
| 1885 | 190 | 25 | 50 |
| 3347 | 200 | 50 | 100 |

Many sizes are immediately available from stock

Product Pictures

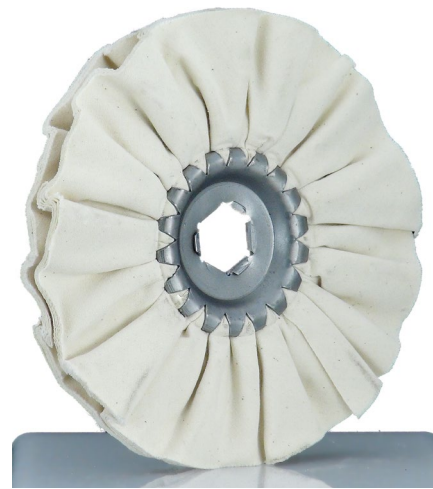
Fabric-Buffering Wheels



Art:1832
Schwabbelscheibe Tuch
Fabric buffering wheel
120x11x19 mm (hexagonal)



Art:1833
Schwabbelscheibe Tuch
Fabric buffering wheel
120x20x19 mm (hexagonal)



Art:3694
Schwabbelscheiben Tuch
Fabric buffering wheel
150x10x19 mm (hexagonal)



Art:1843
Schwabbelscheibe Tuch
Fabric buffering wheel
150x19x50 mm



Art:1835
Schwabbelscheibe Tuch
Fabric buffering wheel
150x20x19 mm (hexagonal)



Art:3204
Schwabbelscheibe Tuch
Fabric buffering wheel
150x25x25 mm

Product Pictures

Fabric-Buffering Wheels



Art:1846
Schwabbelscheibe Tuch
Fabric buffering wheel
150x25x50 mm



Art:1847
Schwabbelscheibe Tuch
Fabric buffering wheel
150x27x11 mm



Art:1848
Schwabbelscheibe Tuch
Fabric buffering wheel
160x20x40 mm



Art:1853
Schwabbelscheibe Tuch
Fabric buffering wheel
160x25x50 mm



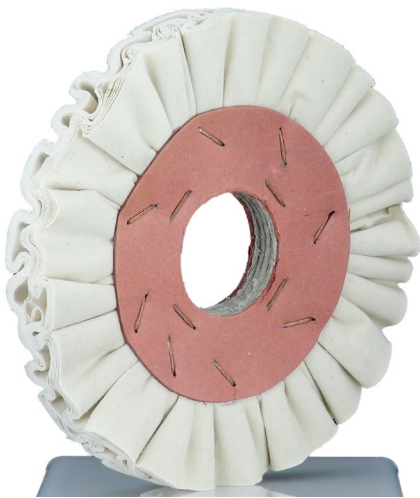
Art:1855
Schwabbelscheibe Tuch
Fabric buffering wheel
160x25x55 mm



Art:1857
Schwabbelscheibe Tuch
Fabric buffering wheel
190x20x40 mm

Product Pictures

Fabric-Buffering Wheels



Fabric-Sisal-Lamellar Wheels



Art:1871
Tuch-Sisal Lamellenrad 3:1 tlg.
Fabric-Sisal-Lamellar wheel 3:1
ratio
120x20x19 mm (hexagonal



Art:3116
Tuch-Sisal Lamellenrad
Fabric-Sisal Lamellar wheel
140x20x19mm runde Bohrung /
round bore



Art:1875
Tuch-Sisal Lamellenrad 3:1 tlg.
Fabric-Sisal-Lamellar wheel 3:1
ratio
140x25x50 mm

Product Pictures

Fabric-Sisal-Lamellar Wheels



Art:3140
Tuch-Sisal Lamellenrad 2:1 tlg.
Fabric-Sisal-Lamellar wheel 2:1
ratio
150x20x19 mm (hexagonal)



Art:1877
Tuch-Sisal Lamellenrad 3:1 tlg.
Fabric-Sisal-Lamellar wheel 3:1
ratio
160x25x40 mm



Art:1878
Tuch-Sisal Lamellenrad 3:1 tlg.
Fabric-Sisal-Lamellar wheel 3:1
ratio
160x25x50 mm



Tuch-Sisal Lamellenrad 3:1 tlg.
Fabric-Sisal-Lamellar wheel 3:1
ratio
160x25x55 mm



Art:3140
Tuch-Sisal Lamellenrad 2:1 tlg.
Fabric-Sisal-Lamellar wheel 2:1
ratio
150x20x19 mm (hexagonal)

Leading Machine manufacturers recommend and work with **Original-RIEPE®-Products!**